

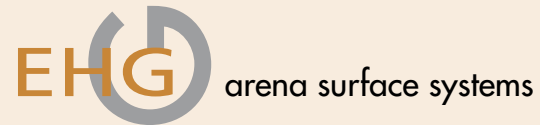


Building of riding arenas at its finest – the foundation for healthy horse legs

The appropriate arena surface is the foundation for good riding, both for leisure as well as for competitive sports. Are you looking for a functional surface for your indoor or outdoor arena or an event arena for your horse show, flooring for paddocks or your racecourse?

If we know the location of your new riding arena, we will create a master plan adapted to your requirements and needs.

- All-round arena
- Premium dressage arena
- Premium jumping arena
- Western riding arena



EHG GmbH

Hovesaatstr. 6
D-48432 Rheine

Tel. +49 (0) 59 71- 96 43 55
Fax +49 (0) 59 71- 96 43 77

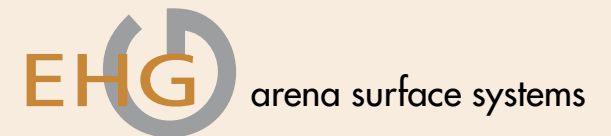
E-Mail: info@arenasurfacing.com

www.arenasurfacing.com



The key to success Layer by layer

System components and solutions
for the building of riding arenas



innoReit-tex® additives for arena surfaces/footing

Polyester shreds and fibers

Synthetic shreds and fibers improve the footing and balance the different characteristics of the arena surface. We supply mixtures for dressage, jumping and multi-purpose arenas in the colors white, pastel green or beige. In addition to careful maintenance, the synthetic additives assure a long-lasting, durable riding arena.

- Effective balance of grounds that are too soft or too compact
- Improved stability and elasticity
- Increased cushioning of the footing with a high slip resistance and shear strength – protects ligaments and joints of the horse
- Reduced dust development when dry
- Improved moisture absorption and moisture storage
- Frost-proof footing
- Prevents mildew build-up
- Environmentally friendly – harmless to humans and animals
- Very high resistance against acids, bacteria and UV radiation
- Recyclable



Interlayers

Interlayers are required to prevent mixing of the supporting ground and the footing. The interlayer must be permeable to precipitation but it must also be capable of storing water to give it back to the footing (perforated mats with water reservoir). At the same time, the interlayer must be shock-absorbant, resilient, slip-proof and shear-proof.

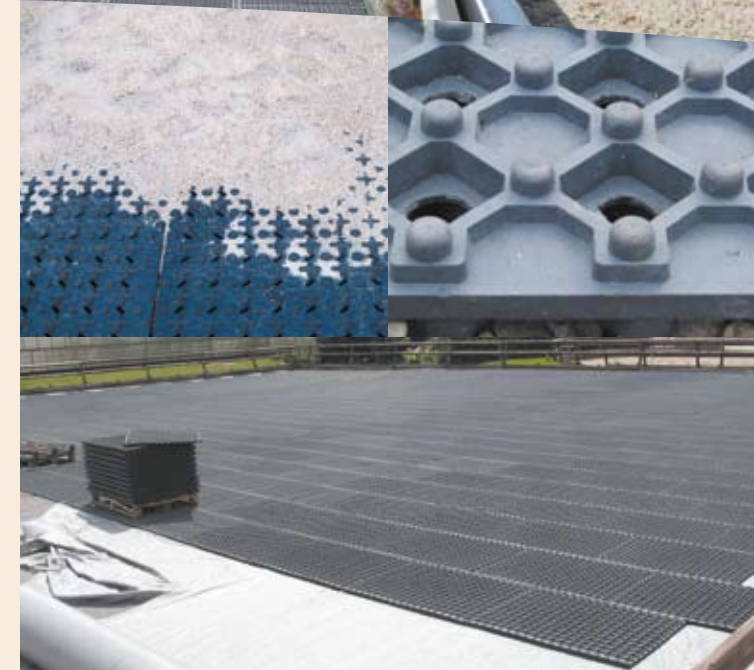
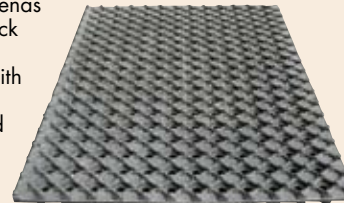
Perforated mat for riding arenas and paddocks

Length: 1200 mm Width: 830 mm
Height: 40 mm Surface area: approx. 1 m²
Weight: approx. 21 kg Color black/grey

Material: 100% PVC, UV-stabilized
Application: Outdoor, Indoor arenas
(Jumping and Dressage), Paddock

Highly resistant interlayer mat with

- perfect traction on safe ground
- highly effective, permeable holes on the upper side -
- optimum drainage-water-storing cups rapid
- water-transfer groove structure on the lower side
- highly elastic and shock-absorbing
- complex substructure is not required
- safe rest on solid ground
- insulating effect



Western-Reining mat, Polo arena mat

Length: 1000 mm Width: 850 mm
Height: 40 mm Surface area: approx. 0.8 m²

Material: 100% elastic pvc
Tongue and groove system/fold groove
Applications: Western-Riding arenas, Polo arena



Reference: Olympic Games 2008 in Hong Kong

(Designed by Oliver Hoberg)

